

GROW WILD COMMUNITY PROJECTS



UK wildflowers and fungi are underappreciated and their habitats under threat.

GROW WILD HELPS CHANGE THIS.

WE AWARD UP TO **£4,000** FUNDING TO TRANSFORM SPACES AND BUILD COMMUNITY **CONNECTIONS.**

Since 2014, Grow Wild has...

**AWARDED £830,000 TO 294 COMMUNITY GROUPS
ENGAGED OVER 110,000 PEOPLE THROUGH
2,200 EVENTS.**



We're part of

Royal Botanic Gardens
Kew



Kew's mission is to build an understanding of the world's plants and fungi.



GROW WILD COMMUNITY PROJECTS



WHO TOOK PART?

About half living in the 30% most deprived areas of the UK

54% MALE | 46% FEMALE

Diverse groups, including

21% EDUCATION GROUPS

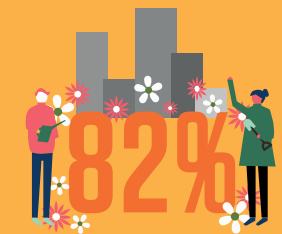
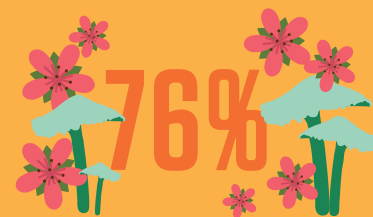
16% YOUTH GROUPS

12% NEIGHBOURHOOD IMPROVEMENT GROUPS

11% FOOD GROWING GROUPS

11% PHYSICAL & MENTAL HEALTH GROUPS

AFTER TAKING PART...



PARTICIPANTS



Increase confidence and problem solving skills



Build pro-environmental attitudes and behaviour



Think differently about wildflowers and nature



Start doing new things for nature



Positively change attitudes towards other people

LONG TERM IMPACT AFTER 12-18 MONTHS...

Around **half** of groups increased connections to nature

Around **two-thirds** of groups increased connections to their community

“ It didn't matter what age you were, or what you done, or what your problems were, we are all just working together.

“ Two years on and we still have volunteers!